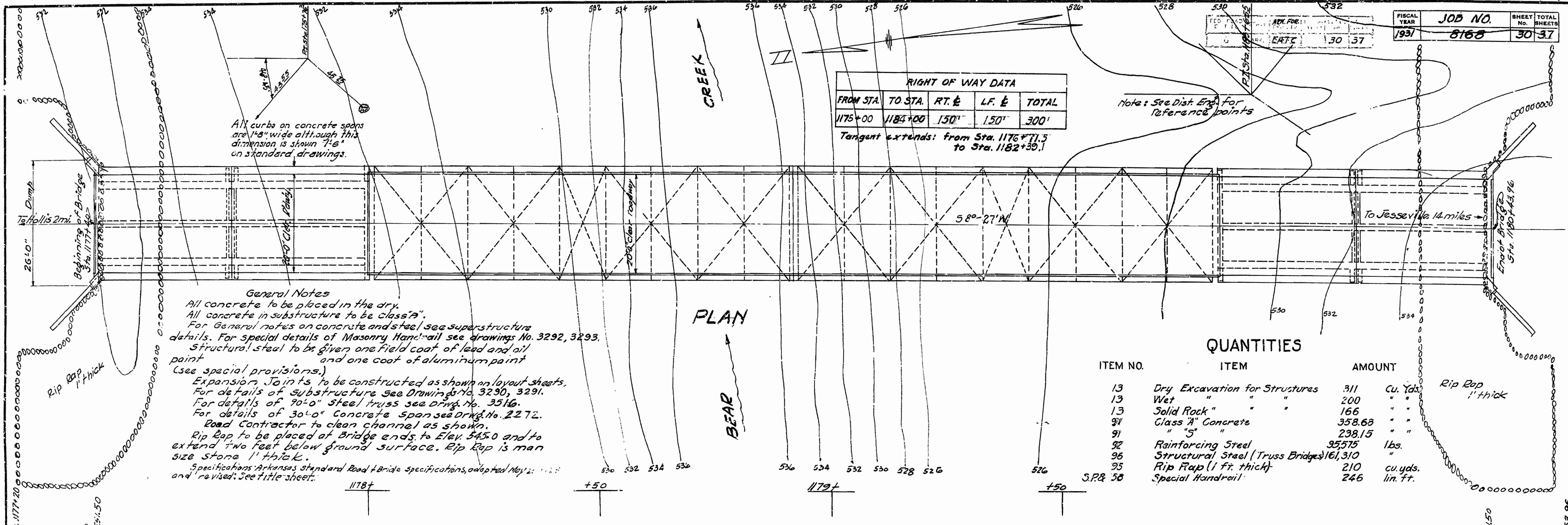




FROM STA.	TO STA.	RT. E.	LF. E.	TOTAL
1175+00	1184+00	150'	150'	300'

Tangent extends: from Sta. 1176+71.5 to Sta. 1182+39.1

Note: See Dist. Eng. for reference points



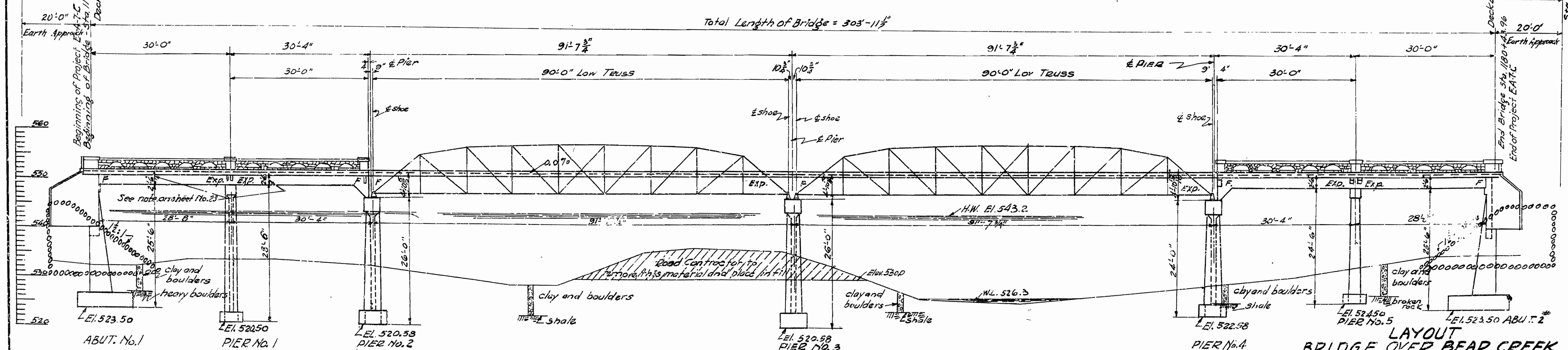
**General Notes**  
 All concrete to be placed in the dry.  
 All concrete in substructure to be class "A".  
 For general notes on concrete and steel see superstructure details. For special details of Masonry Handrail see drawings No. 3292, 3293.  
 Structural steel to be given one field coat of lead and oil and one coat of aluminum paint (see special provisions).  
 Expansion Joints to be constructed as shown on layout sheets.  
 For details of substructure see drawings No. 3290, 3291.  
 For details of 90'-0" steel truss see Drwg. No. 3516.  
 For details of 30'-0" concrete span see Drwg. No. 2272.  
 Road contractor to clean channel as shown.  
 Rip Rap to be placed at bridge ends to Elev. 345.0 and to extend two feet below ground surface. Rip Rap is man size stone 1" thick.  
 Specifications: Arkansas Standard Road & Bridge specifications, adopted May 2, 1928 and revised. See title sheet.

**QUANTITIES**

ITEM NO.	ITEM	AMOUNT	UNIT
13	Dry Excavation for Structures	311	Cu. Yds.
13	Wet " "	200	" "
13	Solid Rock " "	166	" "
91	Class "A" Concrete	358.68	" "
91	" "S" "	238.15	" "
92	Reinforcing Steel	95,375	lbs.
96	Structural Steel (Truss Bridges)	16,310	" "
95	Rip Rap (1 ft. thick)	210	cu. yds.
S.P. & 58	Special Handrail	246	lin. ft.

Total Length of Bridge and Earth Approaches = 343'-11 1/2"

Total Length of Bridge = 303'-11 1/2"



ELEVATION BR. 1721

DRAINAGE AREA: 33 SQ. MI. (Mountainous)

B.M. Elev. 547.05  
 on 12" red oak  
 50' Rt. sta. 1181+00

**LAYOUT**  
**BRIDGE OVER BEAR CREEK**  
**OLA-HOT SPRINGS ROAD**  
**PERRY COUNTY**  
**ROUTE 7 SEC. 8**

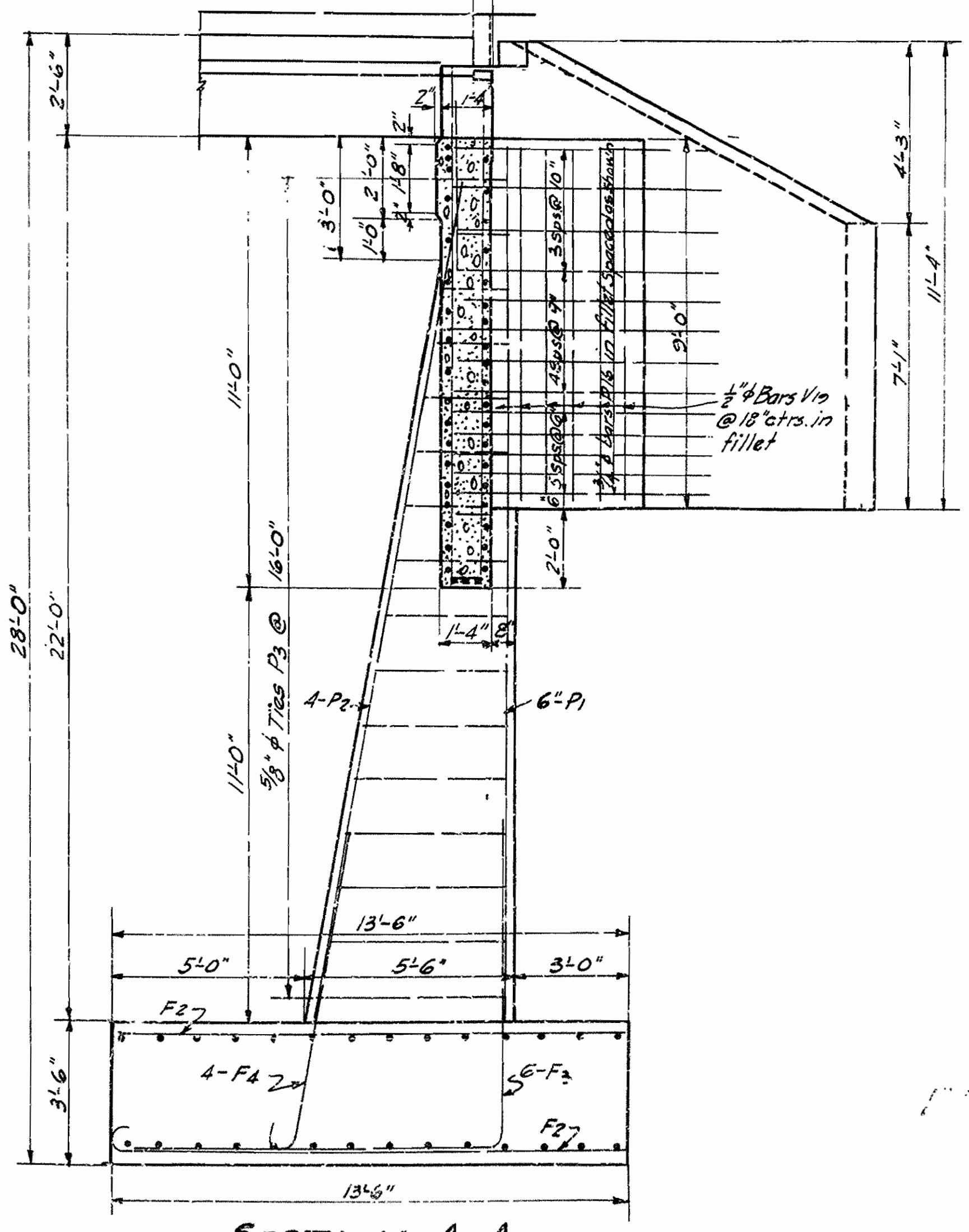
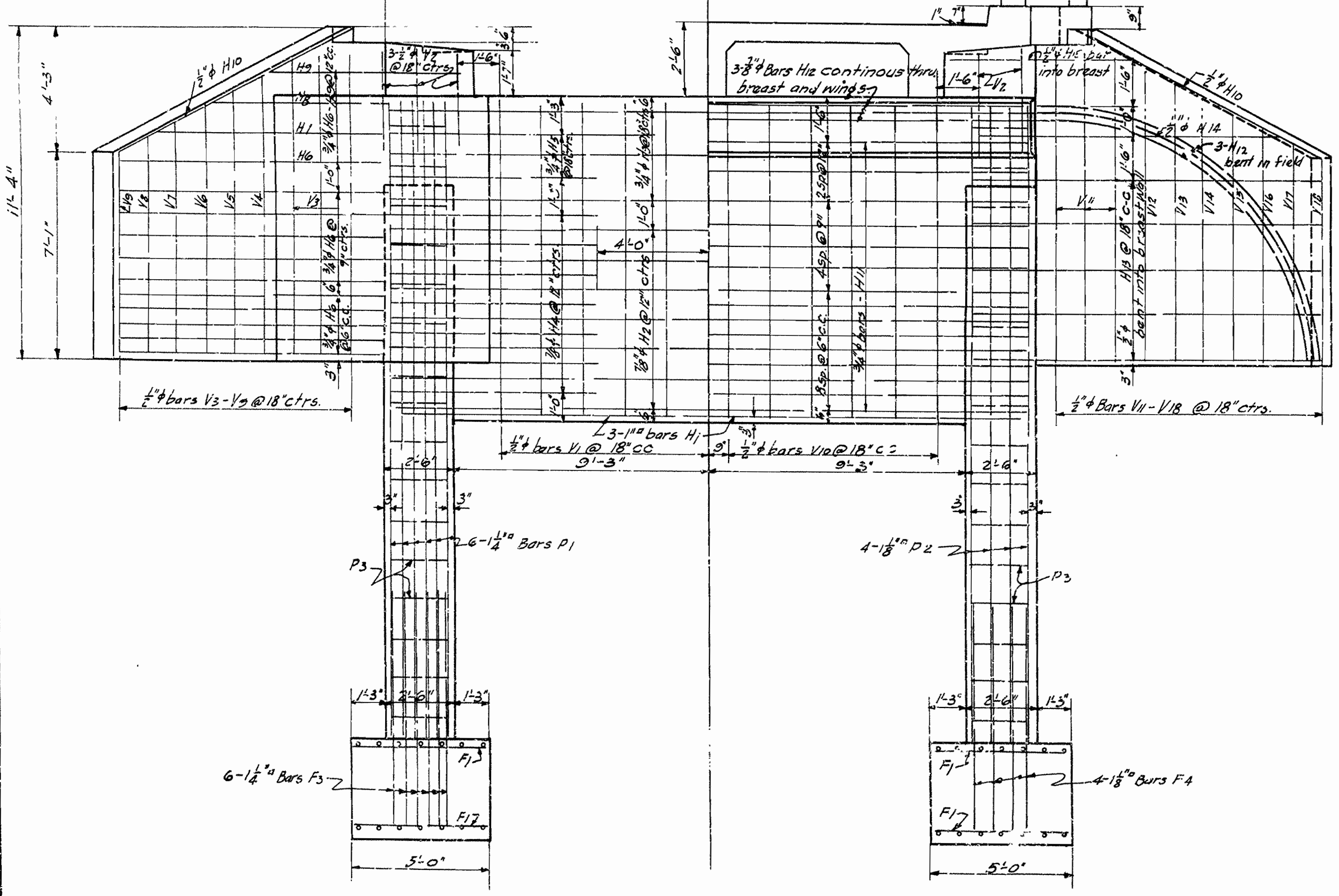
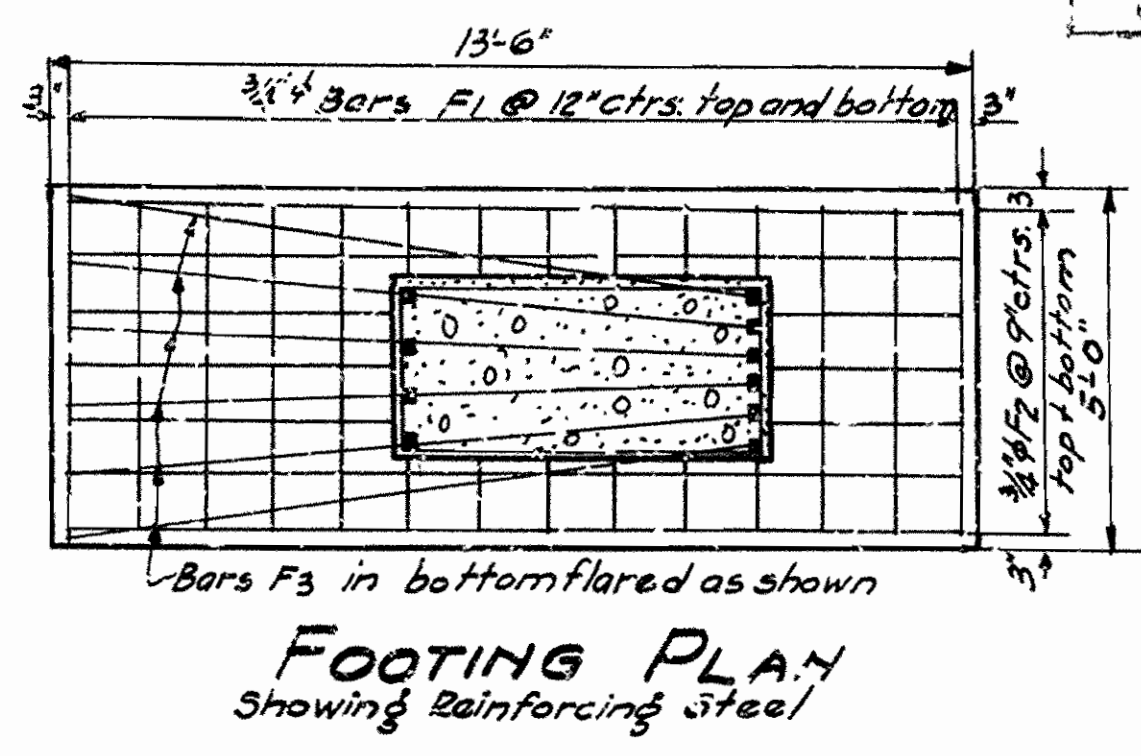
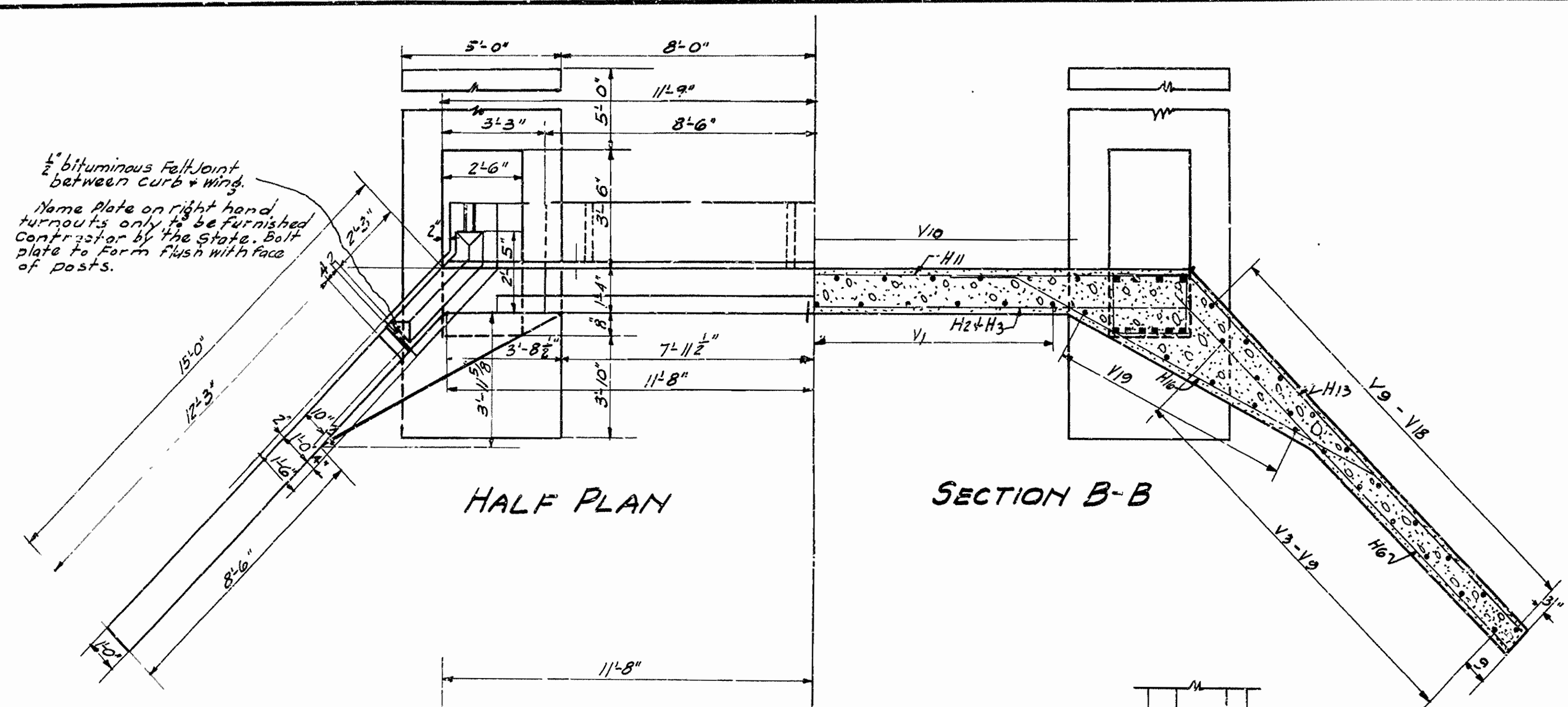
**ARKANSAS STATE HIGHWAY COMMISSION**  
 LITTLE ROCK, ARK.

Drawn By: *REL* Date: 6-2-31  
 Traced By: *MLD* Date: 6-20-31  
 Checked By: *MLD* Date: 8-20-31  
 Scale: 1 in. = 10 ft.  
**BRIDGE No. 1721 DRAWING No. 3289**

*M.B. Sawyer*  
 BRIDGE ENGINEER

FED. ROAD DIST. No.	STATE	ARK. FOR. No.	YEAR	SHEET No.	TOTAL SHEETS
6	ARK.	EVA-7C	32	37	37

FISCAL YEAR	JOB NO.	SHEET NO.	TOTAL SHEETS
1931	8168	37	37



Mark	Size	Length	Bending Diagrams
F3	1 1/4"	19'-0"	
F4	1 1/8"	8'-8"	
P3	5/8"	11'-3" avg.	
H1	1"	25'-0"	
H9	3/4"	9'-0"	
H13	1/2"	16'-8"	
H14	"	14'-3"	
H15	"	8'-3"	
H12	7/8"	40'-9"	
H16	3/4"	16'-6"	

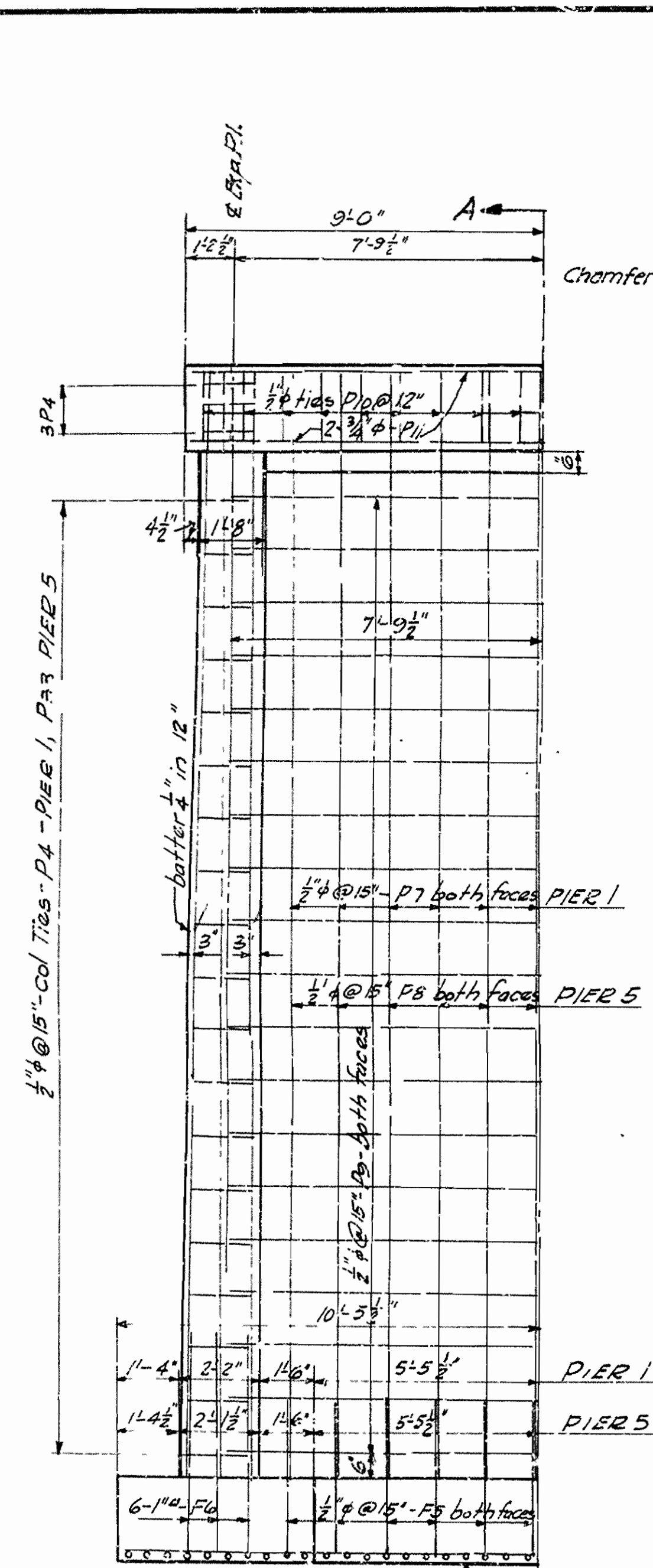
DETAILS OF ABUTMENTS  
 FOR BRIDGE OVER BEAR CREEK  
 OLA - HOT SPRINGS ROAD  
 PERRY COUNTY  
 ROUTE 7 SEC. 8

ARKANSAS STATE HIGHWAY COMMISSION  
 LITTLE ROCK, ARK.  
 Drawn By: REH Date: 6-26-31  
 Traced By: M.K.W. Date: 7-8-31  
 Checked By: \_\_\_\_\_ Date: \_\_\_\_\_  
 BRIDGE NO. 1721 DRAWING NO. 3290

M.B. Lewis  
 BRIDGE ENGINEER

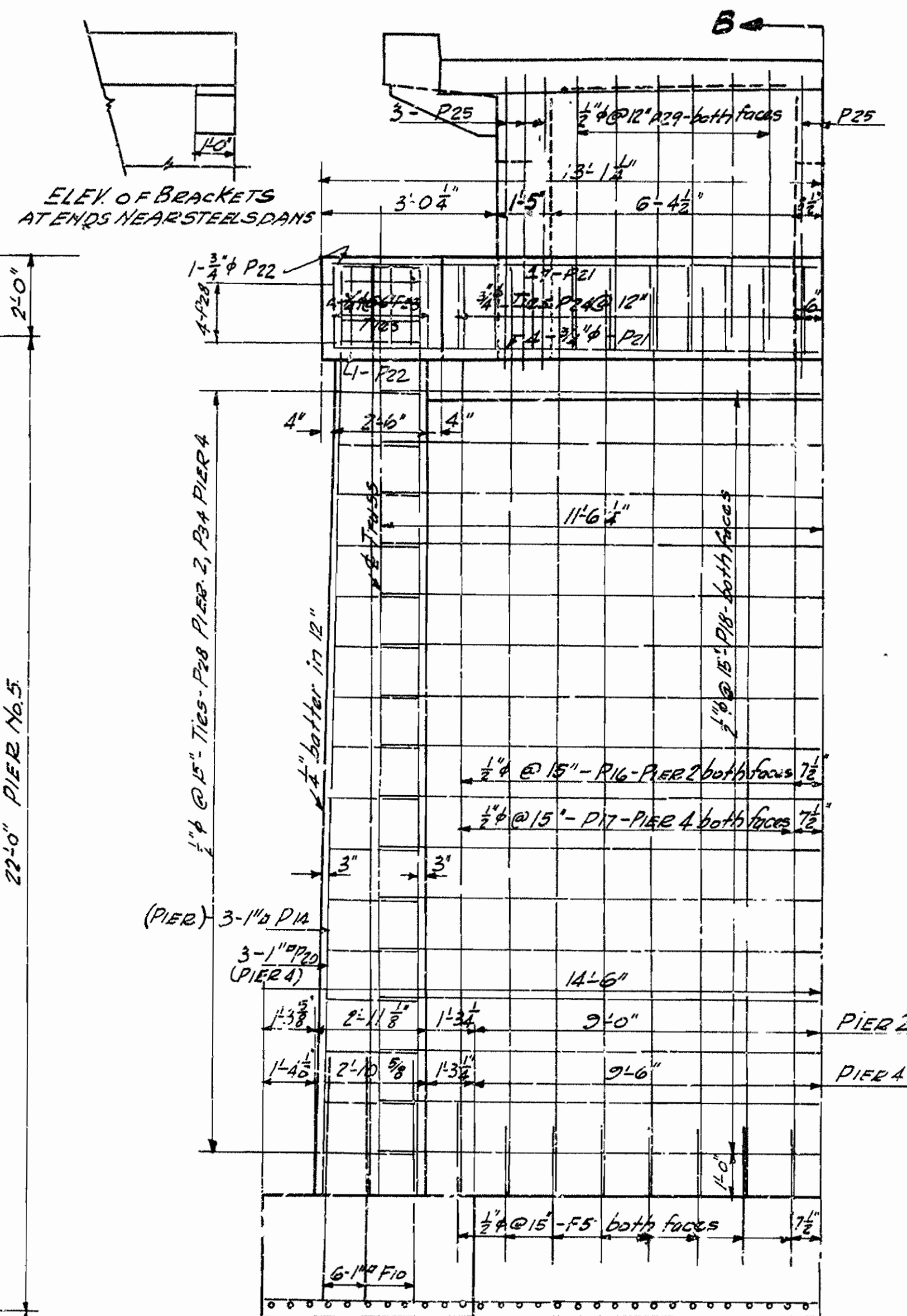
FISCAL YEAR	JOB NO.	SHEET TOTAL
1931	8168	33 37

FOR DETAILS OF EXPAN. PLATES SEE DR. NO. 2272

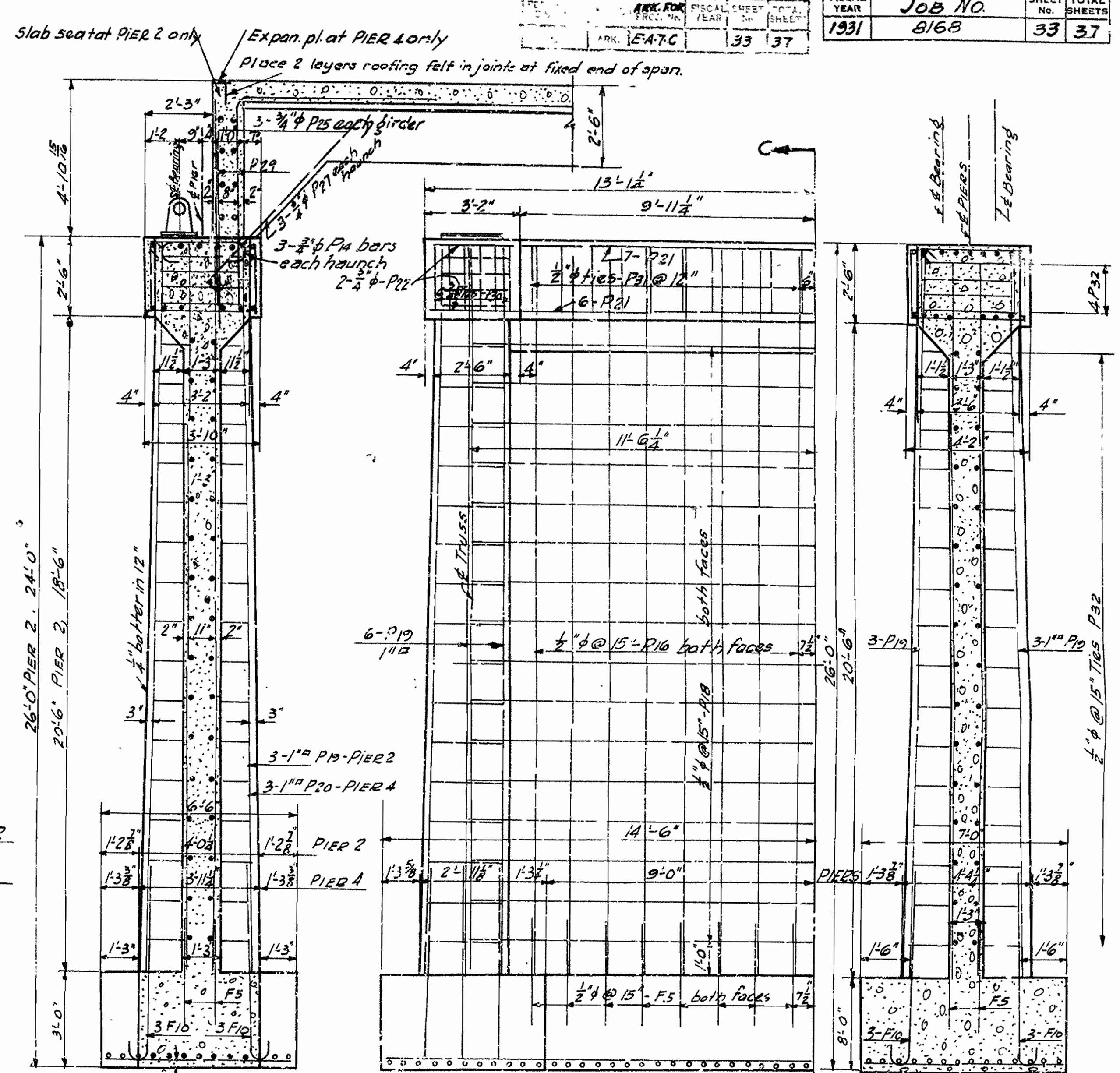


HALF ELEV PIER 1, 5

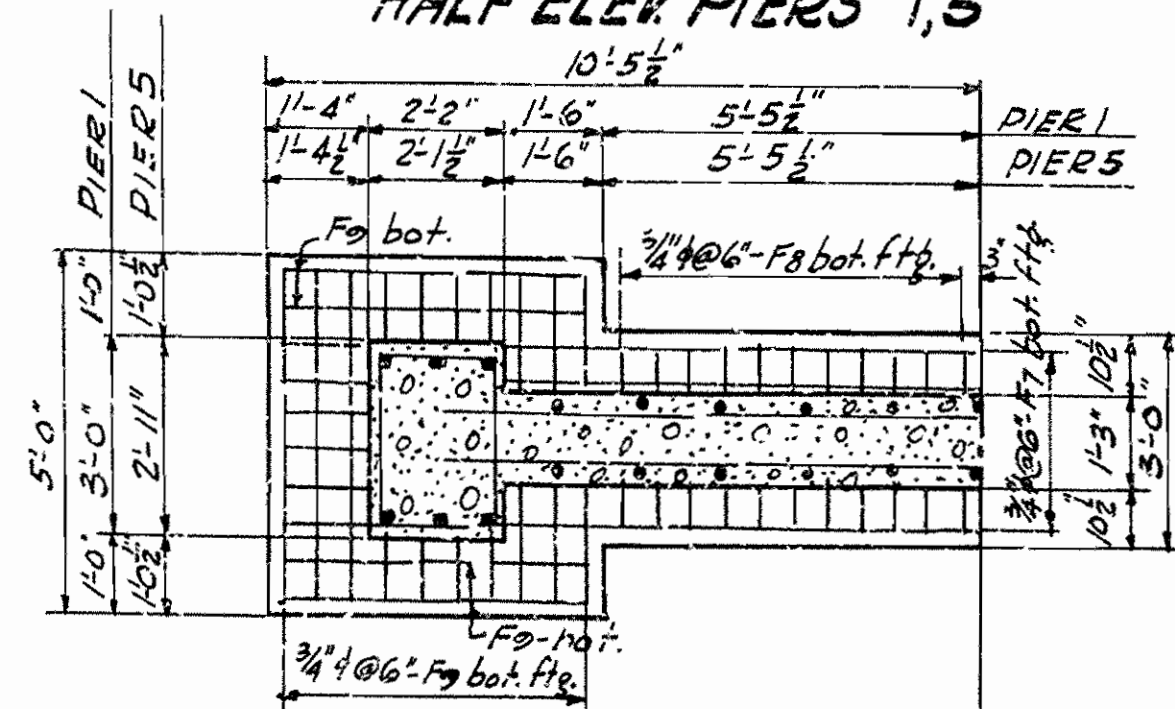
MARK	SIZE	LENGTH
P15	" 8-3"	
P27	" 9-7 7-6"	
P14	" 4-3 2-5"	



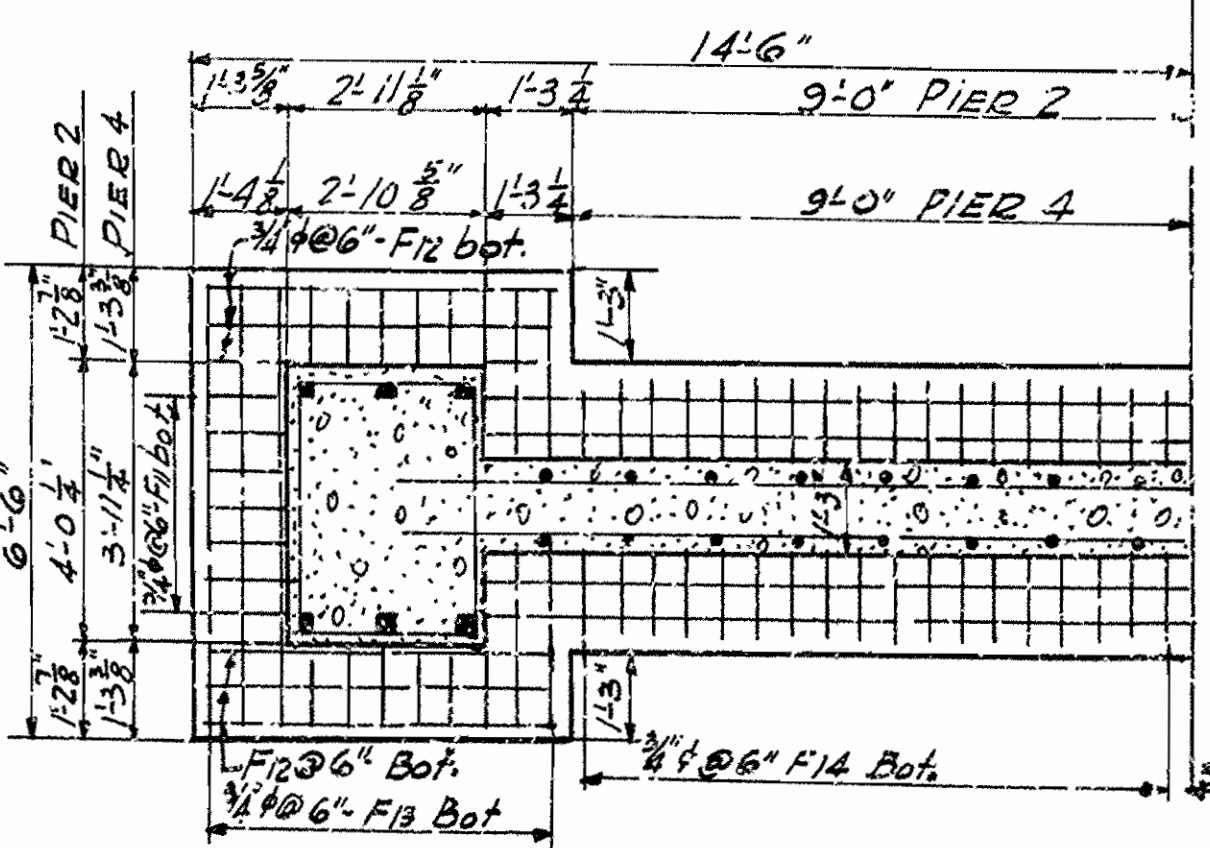
HALF ELEV. PIER 2 + 4



HALF ELEV PIER 3

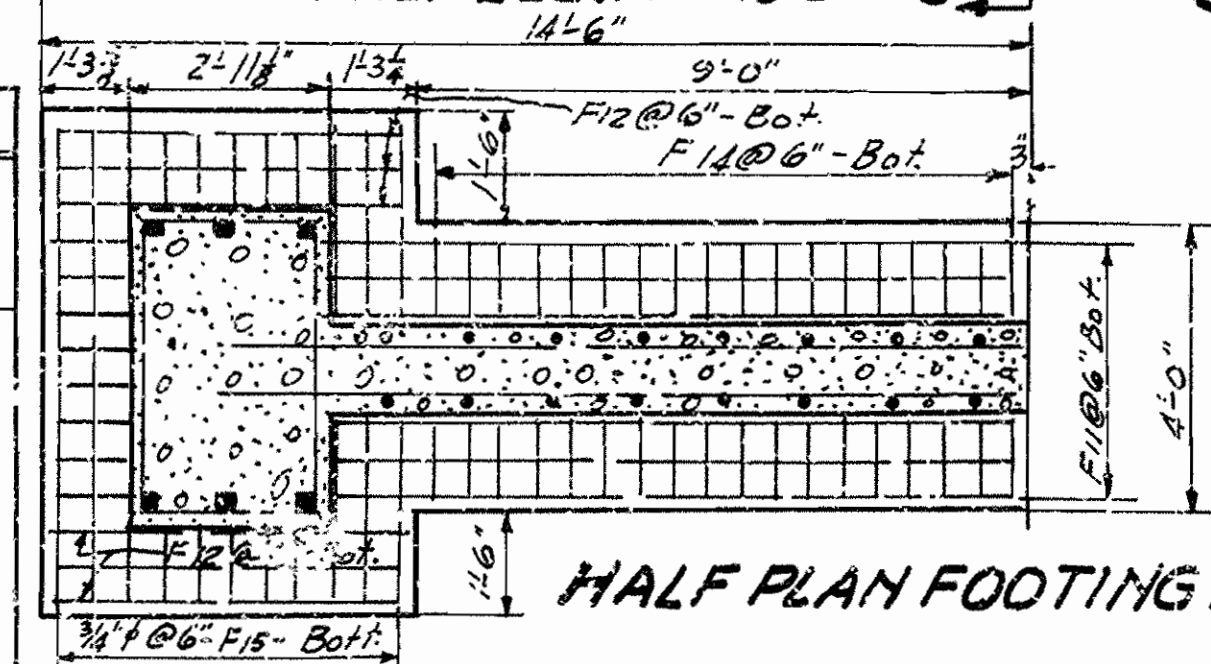


HALF PLAN FOOTINGS PIER 1, 5



HALF PLAN FOOTINGS-PIER 2, 4

MARK	SIZE	LENGTH	A	B
F0	1" x 6'-6"	5'-6"		
F10	" 7'-0"	6'-0"		
P4	8" x 8'-0"	1'-7 1/2"	1'-3 1/2"	
P10	" 8'-0"	2'-0"	1'-8"	
P23	3/4" x 11'-10"	3'-5 1/2"	2'-1 1/2"	
P24	" 11'-2"	3'-1 1/2"	2'-1 1/2"	
P28	1/2" x 11'-8"	2'-7 1/2"	2'-7 1/2"	
P30	3/4" x 6'-7"	3'-1 1/2"	2'-1 1/2"	
P31	1/2" x 11'-2"	3'-1 1/2"	2'-1 1/2"	
P32	" 12'-5 1/2"	3'-7 1/2"	2'-7 1/2"	
P33	" 7'-6"	1'-7 1/2"	1'-7 1/2"	
P34	" 11'-8"	2'-7 1/2"	2'-7 1/2"	
P2	3/4" x 8'-1"	4'-3"		
P25	" 11'-1"	7'-3"		



HALF PLAN FOOTING PIER 3

DETAILS OF PIERS  
BRIDGE OVER BEAR CREEK  
OLA-HOT SPRINGS ROAD  
PERRY COUNTY  
ROUTE 7 SEC. 8

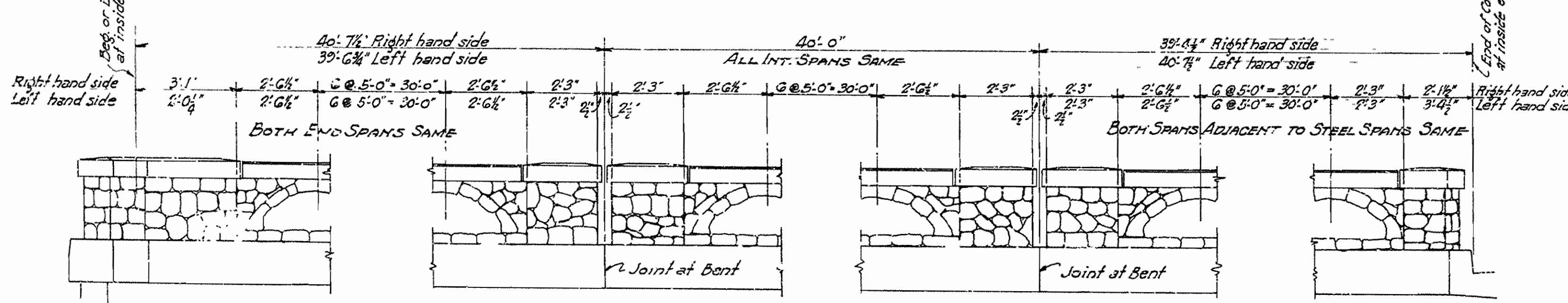
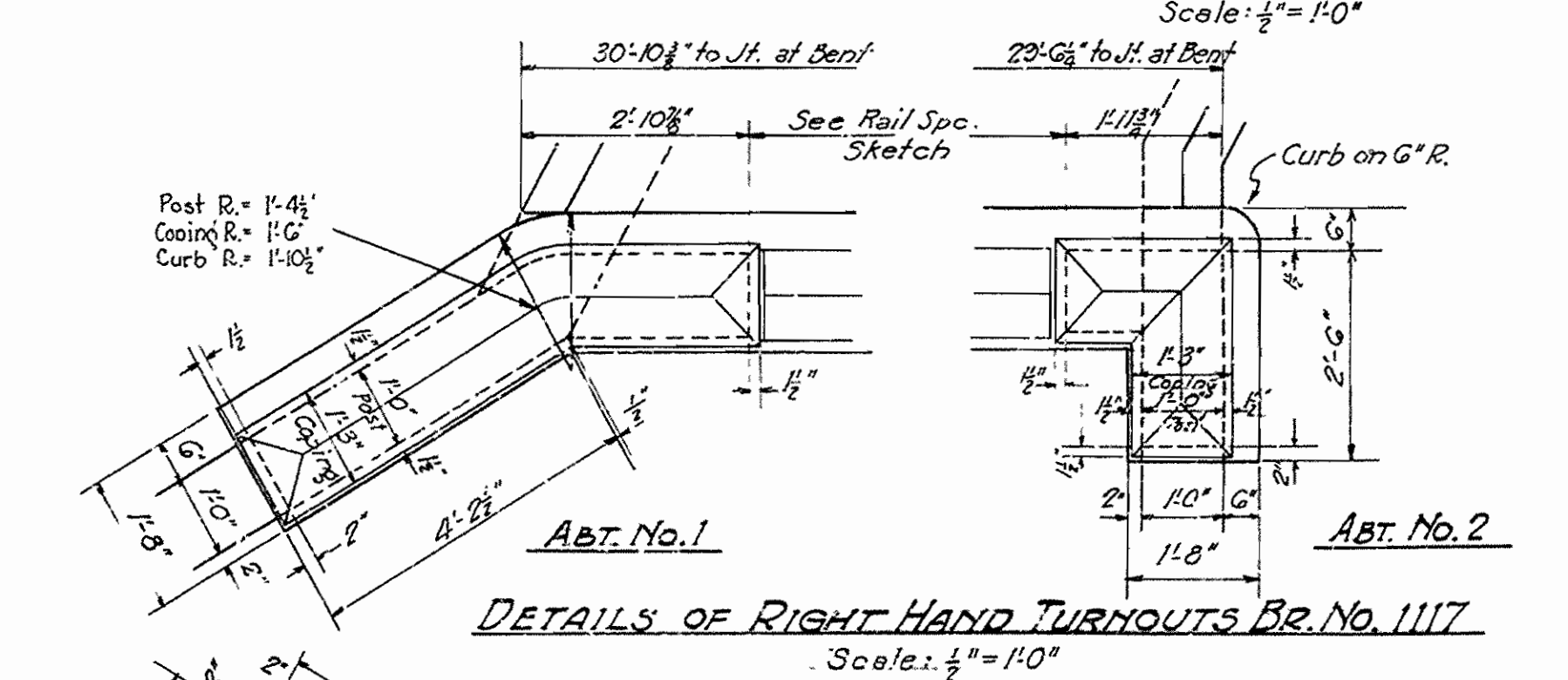
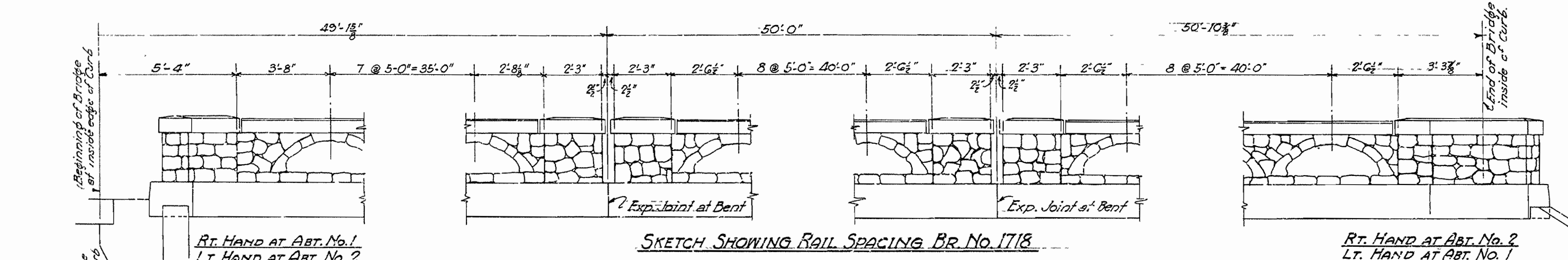
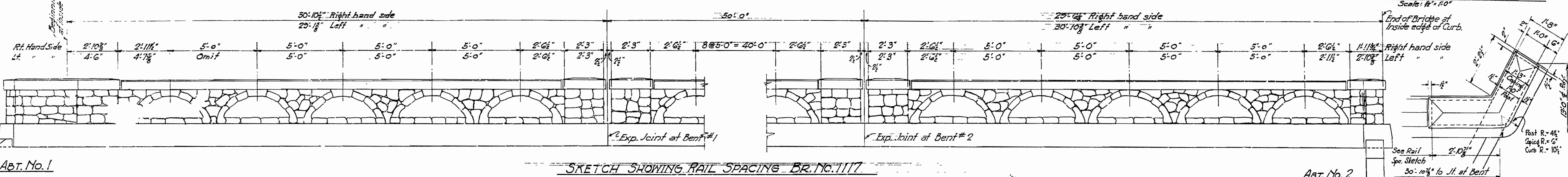
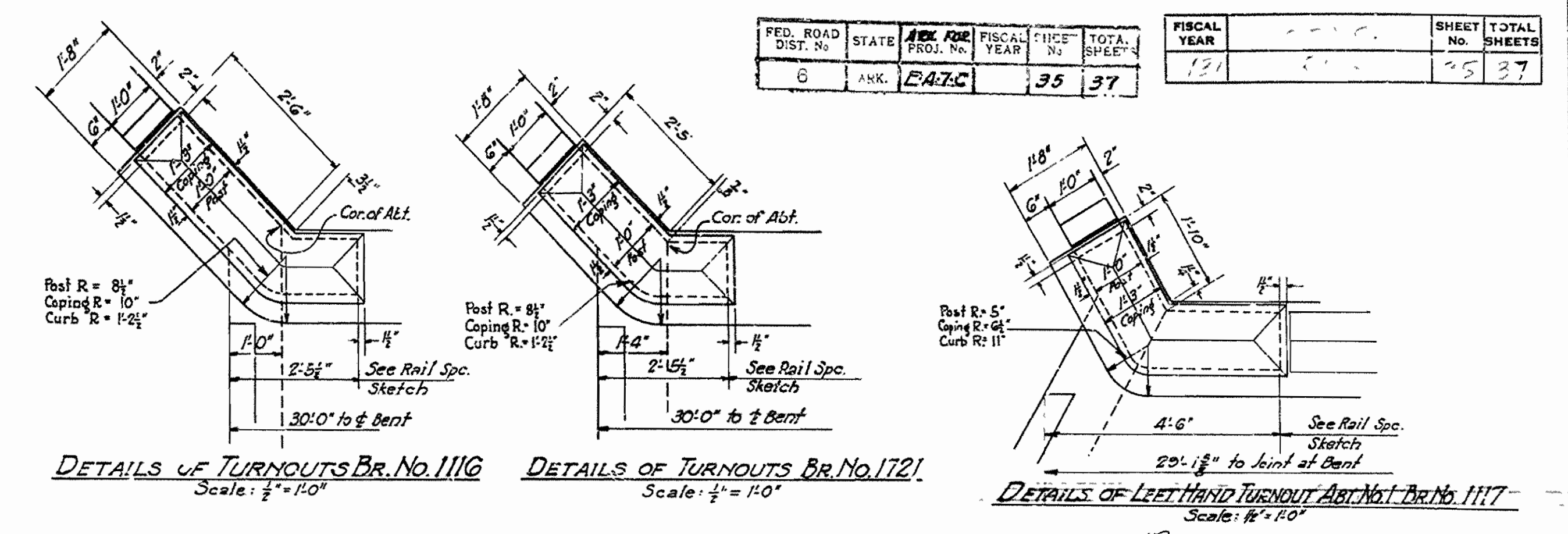
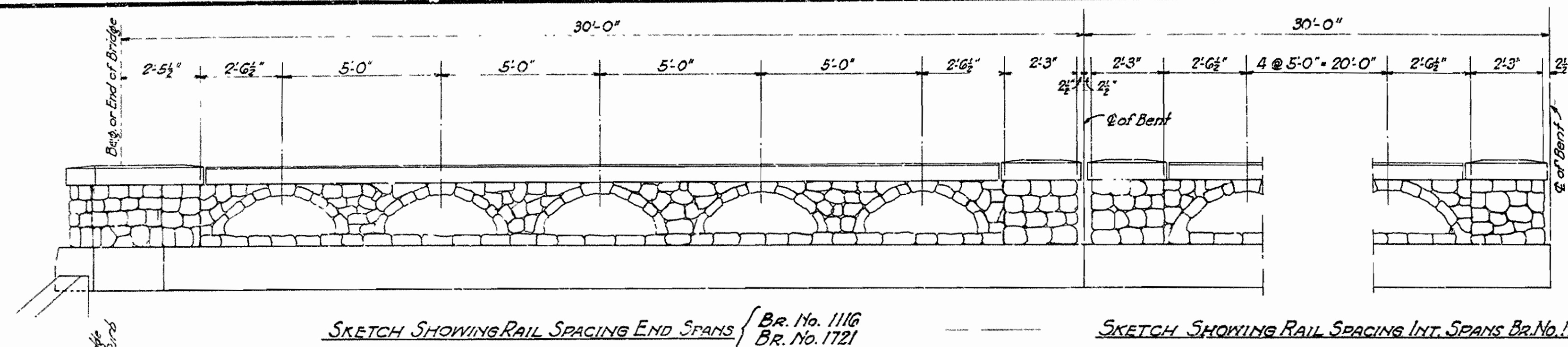
ARKANSAS STATE HIGHWAY COMMISSION  
LITTLE ROCK, ARK.  
Drawn By: R.E.H. Date: 6-21-31  
Traced By: M.H.W. Date: 7-6-31  
Checked By: H.E. Date: 8-20-31  
BRIDGE NO. 1721 DRAWING NO. 3291  
Scale: 3/8" = 1'-0"

W.B. Swann  
BRIDGE ENGINEER

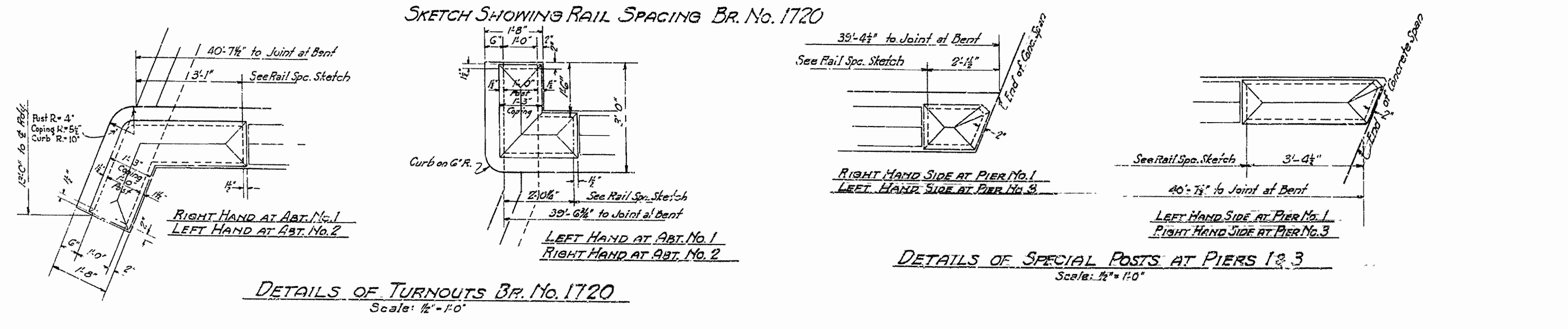
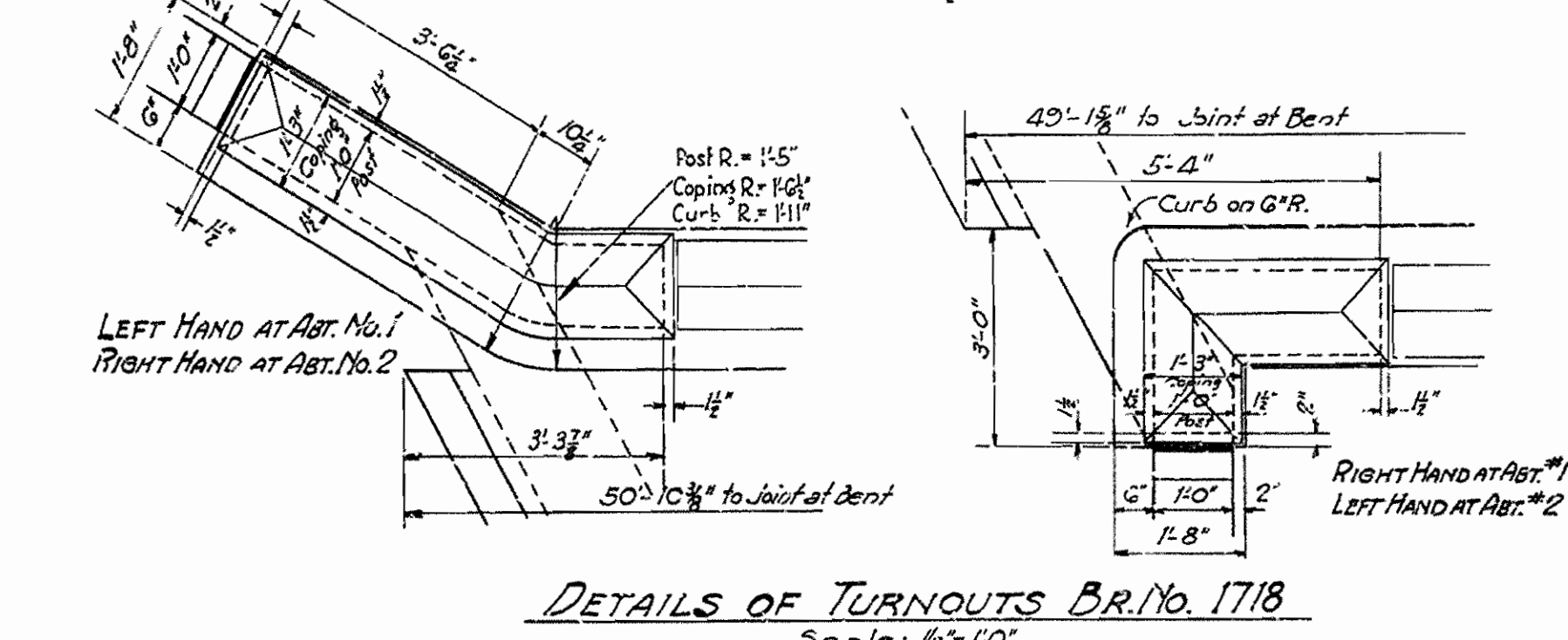


FED. ROAD DIST. No.	STATE	FISCAL YEAR	PROJECT No.	TOTAL SHEETS
6	ARK.	1935	35	37

FISCAL YEAR	SHEET No.	TOTAL SHEETS
1935	35	37



**NOTE!**  
 For general details of handrail and posts See Drawing No. 3202.  
 Dimensions and details of End posts not shown are same as intermediate posts.  
 ALL CURBS ON CONCRETE SPANS ARE TO BE 1'-8" WIDE although this dimension is shown 1'-6" on standard drawings.



**DETAILS OF TURNOUTS & HANDRAIL SPACING FOR BRIDGES ON OLA - HOT SPRINGS ROAD PERRY COUNTY ROUTE SEC. ARKANSAS STATE HIGHWAY COMMISSION LITTLE ROCK, ARK.**

Drawn By: *Law* Date: 8-23-31  
 Traced By: *Law* Date: 1-25-31  
 Checked By: \_\_\_\_\_ Date: \_\_\_\_\_

BRIDGE NO. 1116-1117-1718-1720-21 DRAWING NO. 3293

3/8" in. = 1 ft. end as noted

*M.B. Lauer*  
 BRIDGE ENGINEER



